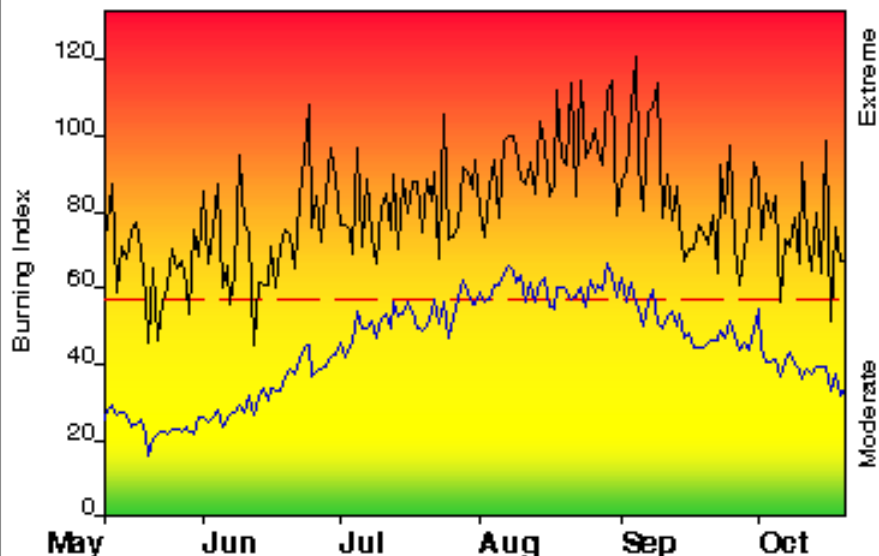


FIRE DANGER -- Owyhee Canyonlands

Maximum, Average, and 70th Percentile, based on 18 years data



Fire Danger Area:

- ◆ Southwest Idaho
- ◆ Fire Weather Zone 419,418
- ◆ SIG - Owyhee Canyonlands
- * Meets NWCG Wx Station Standards



Fire Danger Interpretation:



- EXTREME** -- Use extreme caution
- (Caution)** -- Watch for change
- Moderate** -- Lower Potential, but always be aware

Maximum -- Highest Burning Index by day for 1990 - 2007

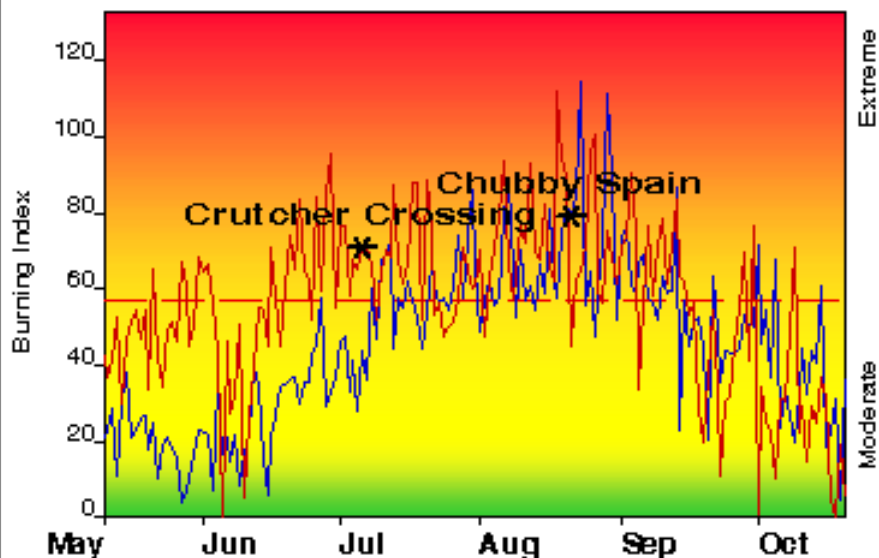
Average -- shows peak fire season over 18 years (2947 observations)

70th Percentile -- Only 30% of the 2947 days from 1990 - 2007 had an Burning Index above 57

Local Thresholds - Watch out:

Combinations of any of these factors can greatly increase fire behavior:
 20' Wind Speed over 8 mph, RH less than 15%,
 Temperature over 84, Burning Index over 57

Years to Remember: 2006 2007



Remember what Fire Danger tells you:

- ✓ Burning Index gives day-to-day fluctuations calculated from 2 pm temperature, humidity, wind, daily temperature & rh ranges, and precip duration.
- ✓ Wind is part of BI calculation.
- ✓ Watch local conditions and variations across the landscape -- Fuel, Weather, Topography.
- ✓ Listen to weather forecasts -- especially WIND.

Past Experience:

Weather Stations used 103207, 103208, 103210, 353614

Date	Fire Name	Size	BI	ERC	Temp	RH	Wind
8/21/06	Chubby Spain	6,074	79	24	91	9%	5
7/06/07	Crutcher Crossing	38,124	71	25	102	4%	8

In this area, large fires tend to occur above the 70th percentile of BI

Responsible Agency: ID-BOD & ID-SW 8

FF+4.0 beta3 05/23/2008-11:57 (C:\WorkSpace\FDOP_03-24-08)

Design by NWCG Fire Danger Working Team

Fuel Model: T - Sagebrush-Grass